





Network marketing is a business model that depends on person-to-person sales by independent representatives, often working from home. A network marketing business may require you to build a network of business partners or salespeople to assist with lead generation and closing sales.



**"Network Marketing gives people the Opportunity, with very low Risk and very low Financial Commitment, to build their own income-generating Assets and acquire Great Wealth."**

-----Robert Kiyosaki

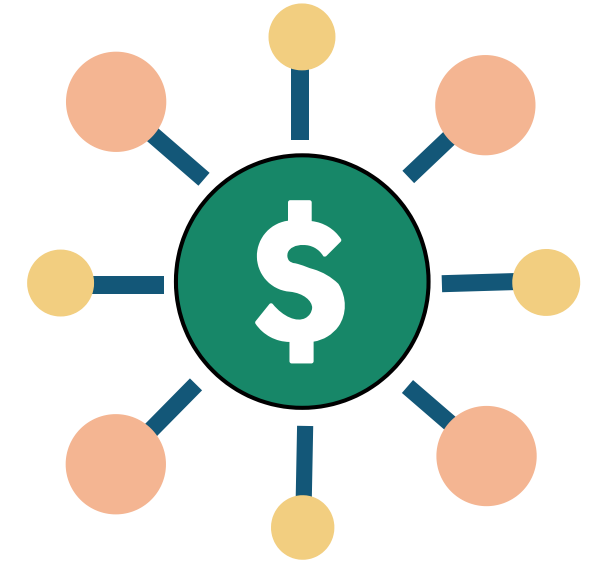
# REWARDS

---



# WHY MRL

---



## FREE REGISTRATION

- ✚ NO BULK BUYING PRODUCTS
- ✚ BALANCE BUSINESS PLAN
- ✚ 20 TYPES OF INCOME
- ✚ NATIONAL AND INTERNATIONAL TOUR
- ✚ REWARD AND AWARD
- ✚ ALL PRODUCTS ARE OWN FORMULATED
- ✚ 30 DAYS MONEY BACK GUARANTEE
  
- ✚ INTERNATIONAL QUALITY PRODUCTS
  
- ✚ EYE CATCHING LOOK OF PRODUCTS
  
- ✚ OUTSTANDING TRAINING &, EDUCATION SYSTEM
  
- ✚ YOU CAN TAKE BENEFIT OF FIRST MOVER ADVANTAGE

# MRL PVT. LTD

## EXCELLENT BUSINESS PLAN AND SOCIAL WORKING:-

### BUSINESS PLAN:-

Package :- 750/- (Get Ladies combo pack)  
(Per day capping 1000/-)

1500/- (Get Ladies combo pack)  
(Per day capping 2000/-)

3000/- (get 3000/- ayurvedic and cosmetics products and per day capping 4000/-)

5000/- (get 5000/- ayurvedic and cosmetics products (per day capping 9000/- )





## PACKAGE BV:-

- 1) 750/-=375BV
- 2) 1500/-=750BV
- 3) 3000/-=1500BV
- 4) 5000/-=2250BV

## RP:-

- 1) 375BV=0.50RP
- 2) 750BV=1RP
- 3) 1500BV=2RP
- 4) 2250BV=3RP





## INCOME FROM FIRST PURCHASE:-

1) ♣ SPONSOR BONUS:- (from BV=30%)

Ex:

\*750BV×30%=225/- (income)

\*2250BV×30%=625/-(income)

2) ♣ MACHINE BONUS:- =20%

Ex-



750 750 =150/-  
BV BV

(Power site carry forward)

3) ♣ SPONSOR OVER RIDING BONUS:- =5%

Ex- Spon. 10×20000=200000×5%

=10000/-income

(Weekly payout)







4) ♣ CASH BACK FROM PACKAGE 5000/-  
After one year per month=500×12month=6000/- total

5) ♣ Reward and awards:-  
"Reward period upto 6 month's"

☆MRL Associate:

50RP:50RP=Leather bag

☆MRL Brand associate:

150RP:150RP=HMT Hand watch

☆MRL Salse associate:

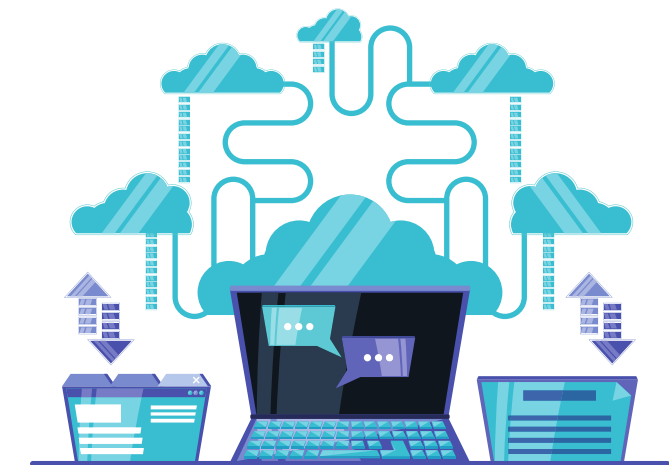
500RP:500RP=Gangtok tour

☆MRL senior associate:

1500RP:1500RP=Laptop

☆MRL Star excutive 1:

4000RP:4000RP=Bike or 80000/-





☆MRL Star executive 2:  
10000RP:10000RP=Car or 4L

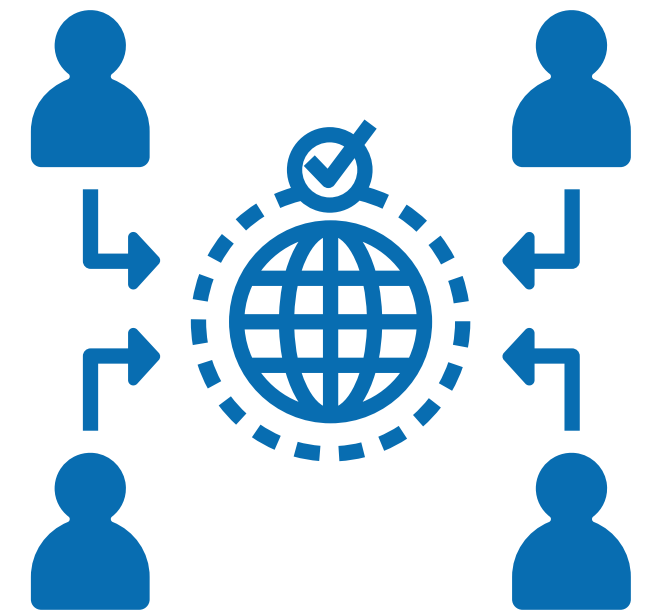
☆MRL Ambassador:  
30000RP:30000RP=Car or 12L

☆MRL Rubi ambassador:  
50000RP:50000RP=Flat or 30L

☆MRL Pearl ambassador:  
1L:1L=Marcities Car or 50L

☆\*MRL Diamond ambassador:  
2L:2L=Banglore or 1.20 coror

☆ MRL BLACK DIMOND:-  
5L:5L= from C.T.O- 2% Royalty life time





## INCOME FROM RE-PURCHASE:-

1) ♣ RETAIL PROFIT:- 10% to 50%

2) ♣ SELF REPURCHASE BONUS:-

(500 bv = 1 POINT)

COMPANY TOTAL TERN OVERS : 5% EQUAL DISTRIBUTION TO THE POINT

3) ♣ SPONSOR OVER RIDING BONUS:-

5% from sponsors income

4) ♣ FIRST SALES REPRESENTATIVE:-

20% from C.T.O.

Ex-

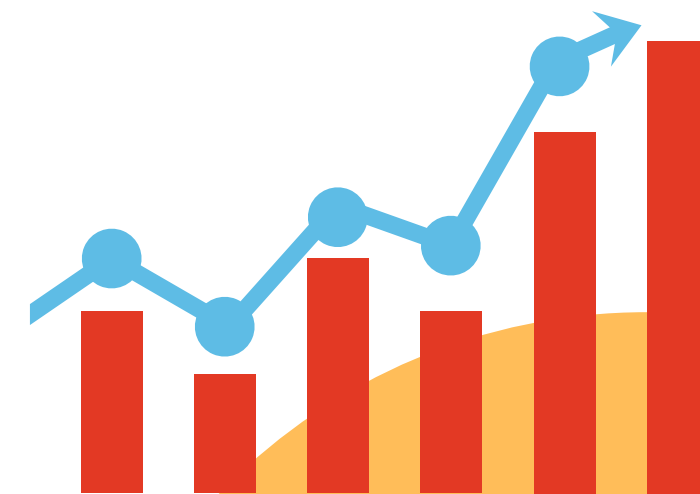


1500BV 1500BV

=1unit

(50unit capping)

20%Equal distribut to unit





**5) ♣ SILVER DIRECTOR:-  
from C.T.O.- 14%**

Ex- 

**9000 9000**

**BV BV**

**=1unit**

**(capping 30unit)**

**14% Equal distribut to unit**

**6) ♣ MRL EDUCATION FUND:-  
10% from C.T.O.**

Ex-



**18000 18000**

**BV BV**

**=1unit**

**(capping 20unit)**

**10% Equal distribut to unit**





**7) ♣ MRL FAMILY PROTECTION BONUS:-  
5% from C.T.O.**

**Ex-**



**20000 20000  
BV BV**

**(This business only 3 months maintained and than get life  
time C.T.O.5% Equal distribut to unite.**

**8) ♣ MRL TRAVEL FUND:-  
5% from C.T.O.**

**Ex-**



**40000 40000  
BV BV  
=1unite**


**(Capping 30unit)  
5% C.T.O Equal distribut to unite**





9) ♣ MRL CAR FUND:-

: from C.T.O. 5%

Ex- 

50000 50000

BV BV

=1unit

(100 capping)

5% C.T.O. Equal distribut to unit

10) ♣ MRL HOUSE FUND:-

from C.T.O. - 5%

Ex- 

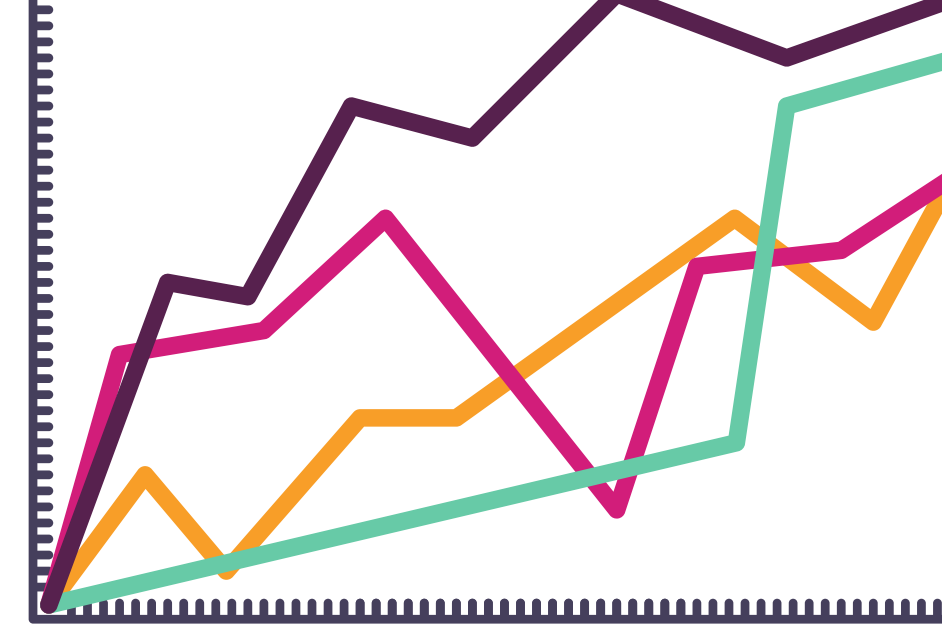
100000 100000

BV BV

=1 unite

(No capping)

5% from C.T.O. equal distribut to unite





## DIAMONDSHIP BONUS 30 DAYS CRITERIA

1}♣ ROSE DIAMOND 5%

Left : 250000 Bv

Right : 250000 Bv

2}♣ BLUE DIAMOND : 2%

♣ BOTH SIDE 1 ROSÉ DIAMOND DIRECTOR

3}♣ CROWN DIAMOND : 2%

BOTH SIDE 1 BLUE DIAMOND DIRECTOR

4}♣ BLACK DIAMOND 1.5%

BOTH SIDE 1 CROWN DIAMOND DIRECTOR

5}♣ IMPERIAL DIAMOND 1.5%

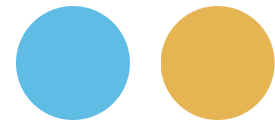
♣ Both side 1 black Diamond president

6}♣ ROYAL DIAMOND 1%

♣ Both side 1 imperial Diamond Director

7}♣ MRL GLOBAL DIAMOND 1%





**BOTH SIDE 2 ROYAL DIAMOND DIRECTOR♣**

**Noted:-**

**One pan card and mobile number one I'd.**



Raiganj, Uttar Dinajpur, W/B, pin code -733134



6294753557

---

**THANKS FOR WATCHING**

**I LOVE MRL**

